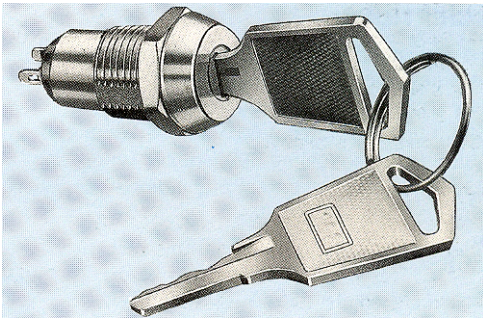
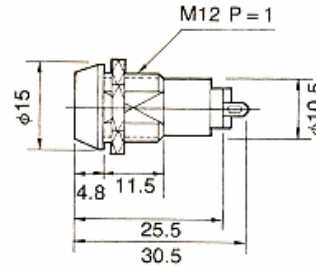
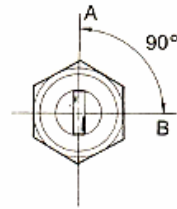


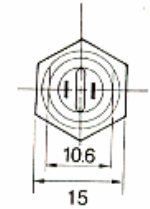
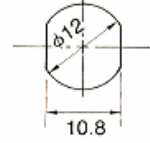
## LKS109B



Unit: mm



HOLE SIZE



### Descriptions:

- Zinc alloy die cast housing with bright stainless steel bezel.
- Brass keys, nickel plated.
- Silver plated contacts and terminals.
- 2 Positions (off-on).
- LKS109B key can be withdrawn at both "off" and "on" positions only.
- 20 combinations available.

### Specifications:

- Contact Rating: 1A 125VAC, 0.5A 250VAC.
- Contact Resistance: 10 milli-Ohms Max.
- Insulation Resistance: 200 Meg-Ohms Min. (500 VDC)
- Dielectric Strength: 1000 VAC-1 Minute.

### Key-Pull Figures:

o-Off Position

I-Indicates Key-Pull

•-Indicates No Key-Pull

Fig. No.	Lock Number	Pole	Positions	Terminals	Key Pulls	Turn	⊕	⊖	Type
1	LKS109B-2	1	2	2	2	90°	Off	On	SPST