



# Rapid Battery Charger

## with LCD Display

For Ni-MH, Ni-CD / AA, AAA Size Batteries



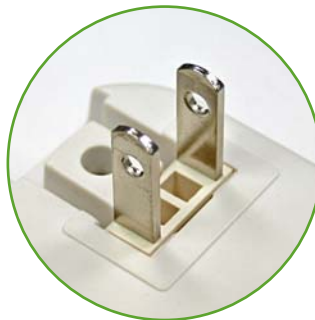
Need power for your electronic accessories? Tired of spending too much money on batteries? Sick of chargers that don't charge your batteries fully? Fed up with chargers that take forever to charge? And are you concerned about the environmental hazards caused by non-rechargeable batteries? Problems solved! Megatone's Z<sup>®</sup> Rapid Battery Charger is exactly what you need.

Never run out of power with our Z<sup>®</sup> Rapid Battery Charger. The Z<sup>®</sup> Rapid Battery Charger is specially designed and is made with top-quality parts to ensure your rechargeable batteries are always fully charged in the shortest amount of time. You can depend on our Z<sup>®</sup> Rapid Battery Charger to provide clean, efficient, and reliable energy source for your electronic accessories.



### LCH-588

Wall Plug Type  
Foldable AC Plug



### LCH-589

Desktop Type



### Special Features:

- (-) Delta Voltage Detection
- Safety Timer Protection
- Alkaline Battery Detection
- Short Circuit Protection
- Over Heat Protection
- Automatic Charge Cut-Off For Safety
- Charge up to 4AA or 4AAA rechargeable Ni-MH batteries

### Specifications:

- Input Voltage: AC 100~240V 50/60Hz
- Charging Time:
  - 1~2 Batteries Approx. 2 Hrs
  - 3~4 Batteries Approx. 4 Hrs
- Charging Voltage: 1.5V
- Charging Current:
  - AA: 2.2A Max
  - AAA: 1.2A Max

### Dimensions:

- Length 12.3 cm, Width 7.0 cm, Depth 3.2 cm

**MEGATONE**  
ELECTRONICS

6F, 20, Sec. 2, Nanjing E. Rd., Taipei 10457, Taiwan  
 TEL: +886-2-2562-8238  
 FAX: +886-2-2562-8169  
 E-mail: orders@MegatoneCorp.com  
 http://www.megatone.com.tw